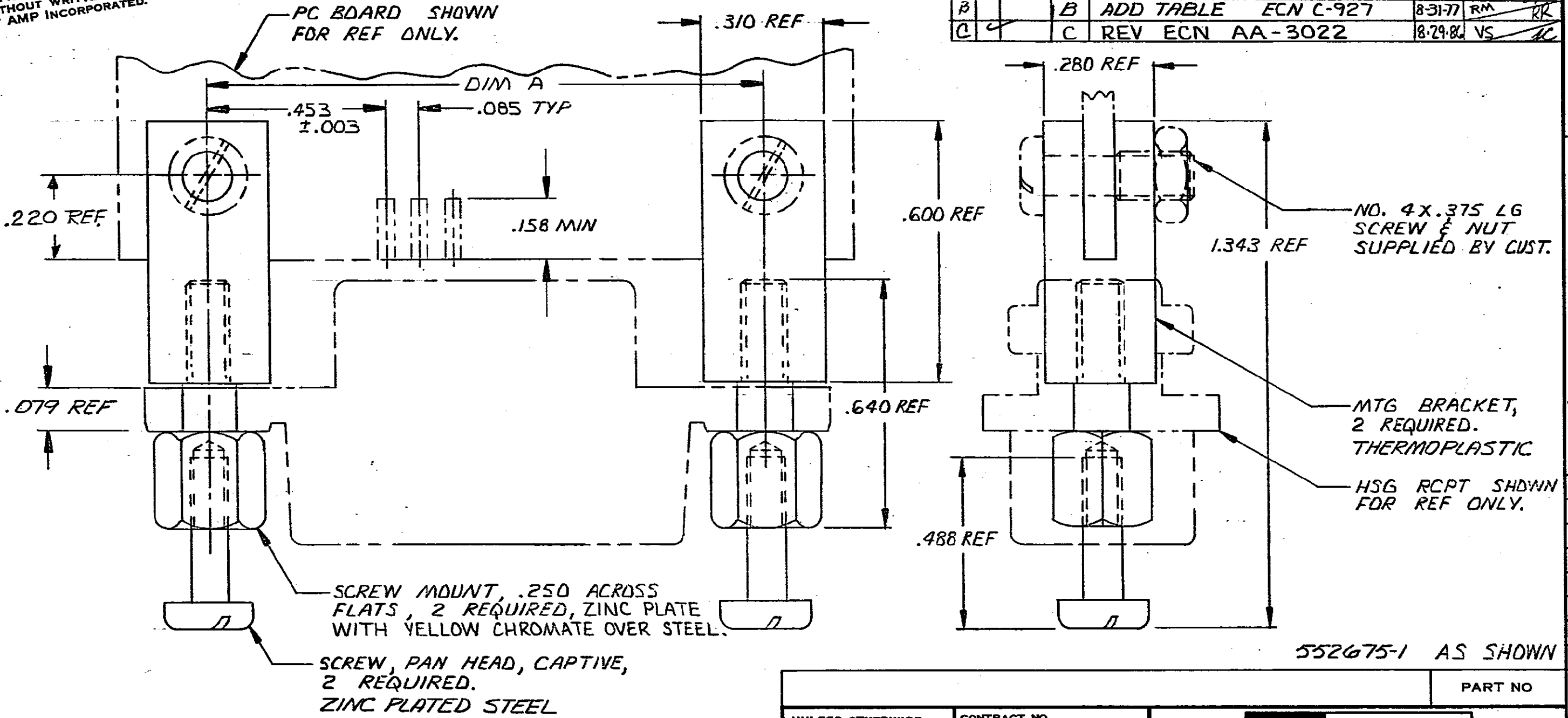


© COPYRIGHT 1976 BY AMP INCORPORATED, HARRISBURG, PA.  
 ALL INTERNATIONAL RIGHTS RESERVED. AMP INCORPORATED PRODUCTS  
 COVERED BY U. S. AND FOREIGN PATENTS AND/OR PATENTS PENDING.

UNPUBLISHED COPY NOT TO BE  
 REPRODUCED NOR PUBLISHED  
 WITHOUT WRITTEN PERMISSION  
 OF AMP INCORPORATED.

REVISIONS

| P | F | ZONE | LTR | DESCRIPTION         | DATE    | APPROVED |
|---|---|------|-----|---------------------|---------|----------|
| C |   |      | D   | RELEASE NPR C77-22  | 4-14-77 | TD       |
| A |   |      | A   | ADD .220 REF C-903  | 9/1/77  | RM       |
| B |   |      | B   | ADD TABLE ECN C-927 | 8-31-77 | RM       |
| C |   |      | C   | REV ECN AA-3022     | 8-29-80 | VS       |



552675-1 AS SHOWN

|            |       |              |
|------------|-------|--------------|
| 64         | 3.542 | ▲            |
| 50         | 2.946 |              |
| 36         | 2.352 |              |
| 24         | 1.842 |              |
| 14         | 1.416 | .125         |
| NO OF POSN | DIM A | MTG HOLE DIA |

CHAMP\* / CHAMP-LOK\* Connectors  
 \* Trademarks of AMP Incorporated

|                                                                                                |  |                                |  |                                                   |  |
|------------------------------------------------------------------------------------------------|--|--------------------------------|--|---------------------------------------------------|--|
| UNLESS OTHERWISE SPECIFIED DIMENSIONS ARE IN INCHES. TOLERANCES ON: DECIMALS ±.015 ANGLES ± 1° |  | CONTRACT NO                    |  | AMP INCORPORATED<br>Harrisburg, Pa.               |  |
| MATERIAL                                                                                       |  | DR. <i>Jerry Peltz</i> 2-12-77 |  | NAME<br>KIT, HARDWARE, SCREW LOCK, EDGE MT, CHAMP |  |
| FINISH                                                                                         |  | CHK. <i>W. Condon</i> 4-26-77  |  | SIZE<br>B                                         |  |
|                                                                                                |  | APPR. <i>W. Condon</i> 4-27-77 |  | CODE IDENT NO<br>00779                            |  |
|                                                                                                |  | DSGN APPD                      |  | DRAWING NO<br>552675                              |  |
|                                                                                                |  | OTHER APPD                     |  | SCALE 4-1                                         |  |
|                                                                                                |  |                                |  | SHEET 1 OF 1                                      |  |

CUSTOMER DRAWING